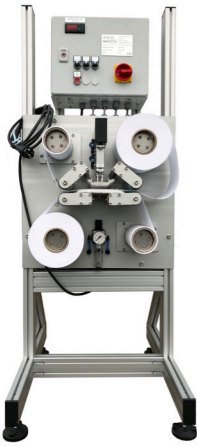
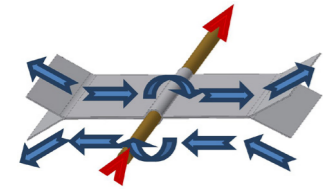


## PRIMARY WIRE WIPE SYSTEM - MECHANICAL WIRE CLEANING



The patented Primary Wire Wipe System (PWW) is a compact, mechanical wiping system for removing visible particulate surface buildup such as dirt and fines, as well as excess drawing material from wires, strands and tapes.

The material to be wiped off passes through two mirror-image, counter-rotating strips of 150 mm wide nonwoven tapes. Wires and strands are guided transversely to the nonwoven tapes. Band



shaped material is guided against the running direction of the two nonwoven tapes.

The continuous forward movement and controlled contact pressure of both cleaning belts ensure reliable and comprehensive contact of the material surface to be treated with always fresh and clean nonwoven fabric, a decisive advantage over classic wiping methods using felt discs, sponges, or rags. Unless they are continuously renewed, these collect excess drawing agents and particles, which in the further course can lead to re-contamination and, in the worst case, to surface defects due to the build-up of particles.

The standard system „PWW - SINGLE“ is suitable for wires and strands up to 2.0 mm diameter and tapes up to 120 mm width. In the version as PWW - TWIN with an additional pair of nonwoven tapes and supplemented by a vertically arranged pair of pressure plates, wire diameters up to 4 mm can be wiped off.

Available for all versions, optionally available gravimetric liquid dosing equipment boost the cleaning effect of the nonwoven tapes. The control comprised rotary encoder for constant tape speed, and signal exchange for external control. Optional liquid dosing is in ml/min. and displayed by digital potentiometer. Further equipment packages, such as enclosures, complete the features list.

### TECHNICAL DATA:

#### PWW - SINGLE

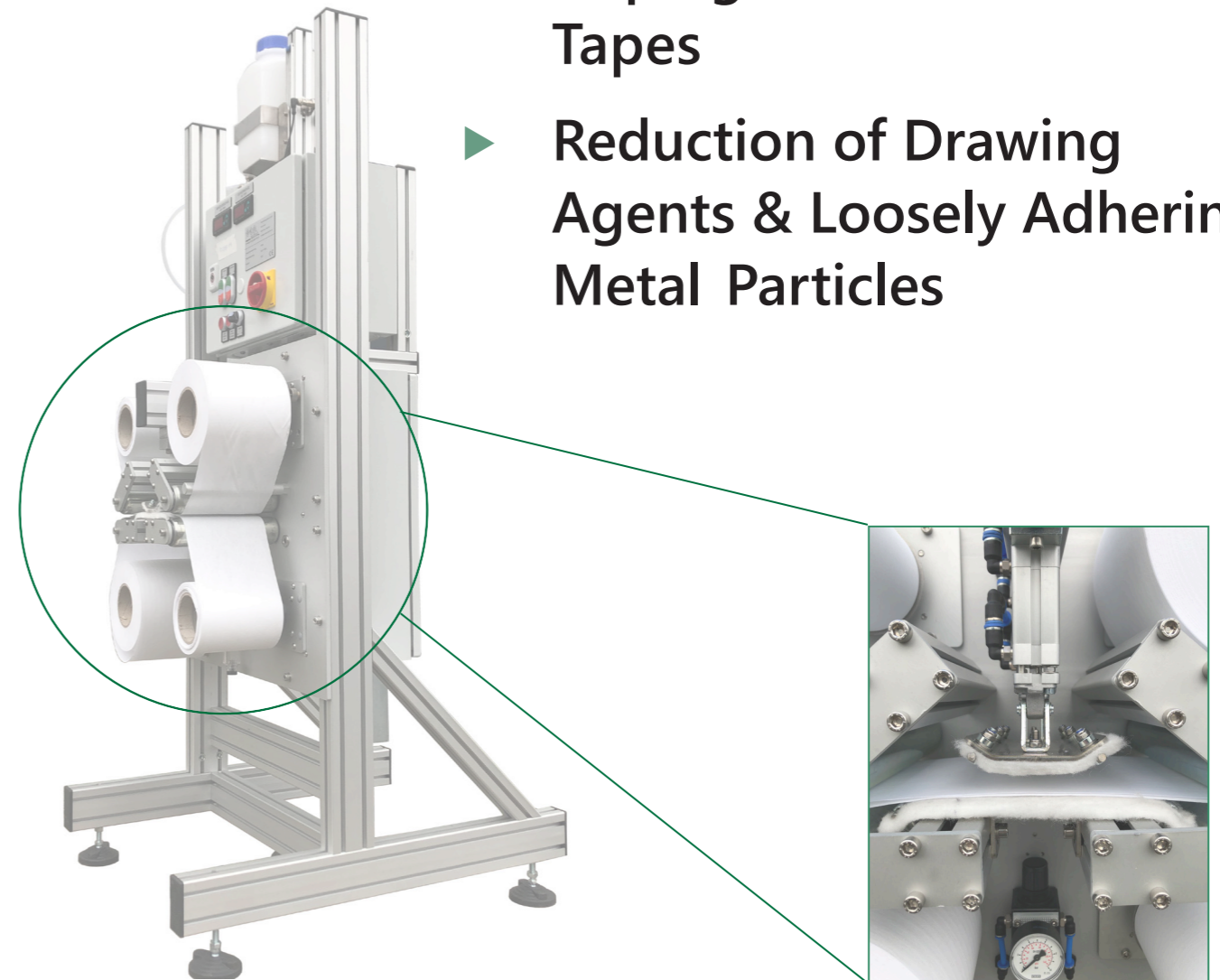
- Wire-Ø range: 0,1 - 2,0 mm
- Band shaped material: max. 120 x 2 mm
- Max. throughput speed: 20 m/sec
- Wire centerline height: 800 - 1200 mm
- Power supply: 230 V
- Air pressure: 2,5 bar
- Dimensions (lxw): 600 x 760 mm (without options)

#### PWW - TWIN

- Wire-Ø range: max. 4,0 mm
- Wire centerline height: 800 - 1200 mm
- Power supply: 230 V
- Air pressure: 2,5 bar
- Dimensions (lxw): 600 x 800 mm (without options)

## PWW - MECHANICAL CLEANING for Wire, Strands & Tapes

- ▶ Wiping with Nonwoven Tapes
- ▶ Reduction of Drawing Agents & Loosely Adhering Metal Particles



**GEO Reinigungstechnik GmbH**

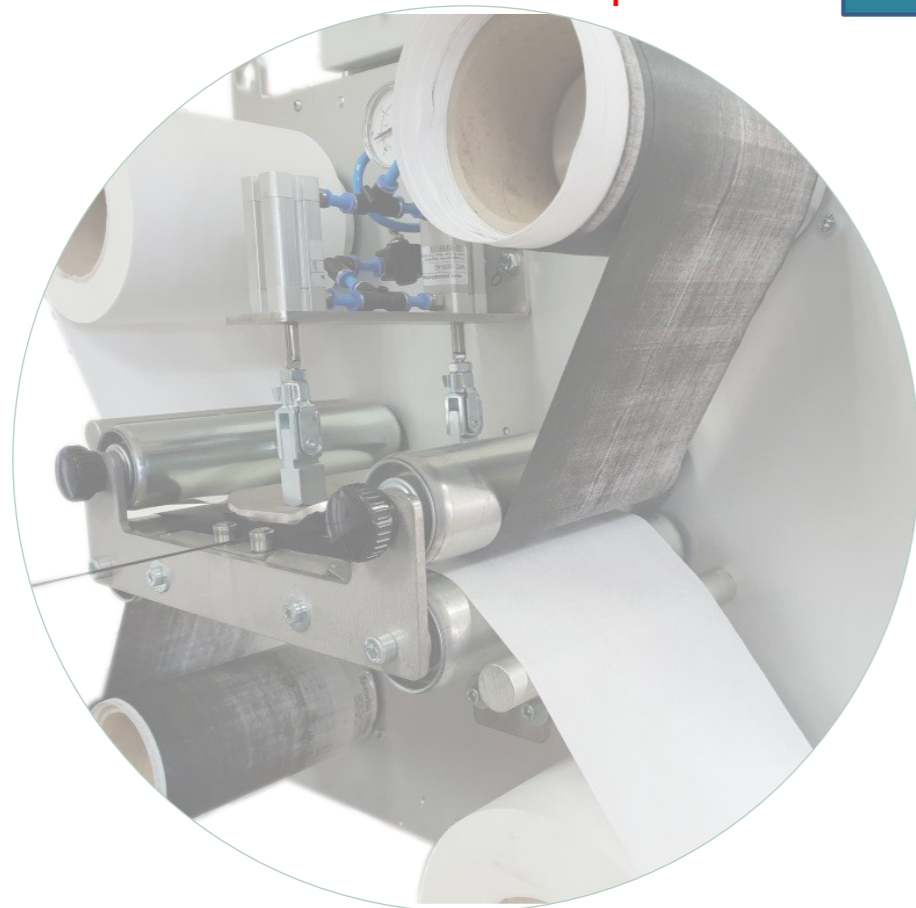
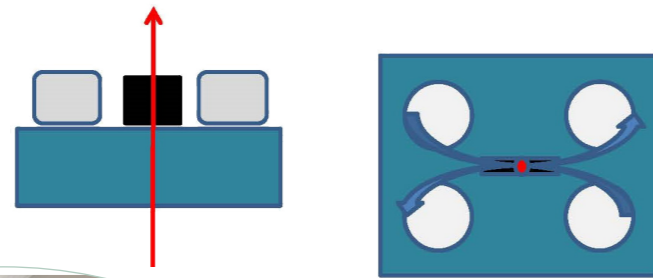
info@geo-reinigungstechnik.de  
www.geo-reinigungstechnik.de

PWW - Wiping with non-woven fabric. Ideal for cleaning thin and / or multiple, parallel wires and narrow belts, dry or wet.

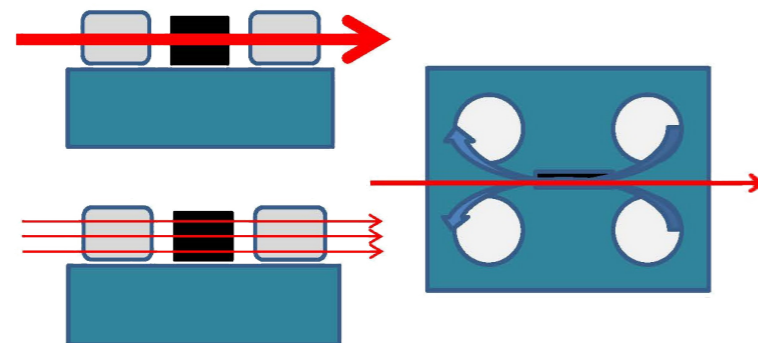
**Perfect for a wide range of cleaning applications**

## PWW SYSTEM > WIPING & CLEANING WITH NONWOVEN

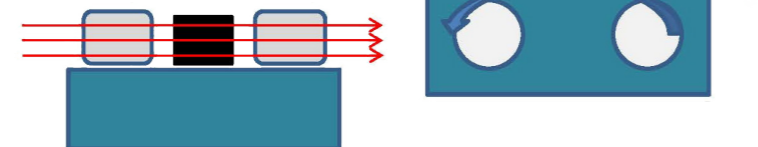
**PWW SINGLE > WIRE RUNNING DIRECTION > NONWOVEN TAPES RUNNING IN OPPOSITE DIRECTIONS**



**PWW SINGLE > TAPE RUNNING DIRECTION > NONWOVEN TAPES RUNNING IN THE SAME DIRECTION**



**PWW SINGLE > MULTI-WIRE RUNNING DIRECTION > NONWOVEN TAPES RUNNING IN THE SAME DIRECTION**

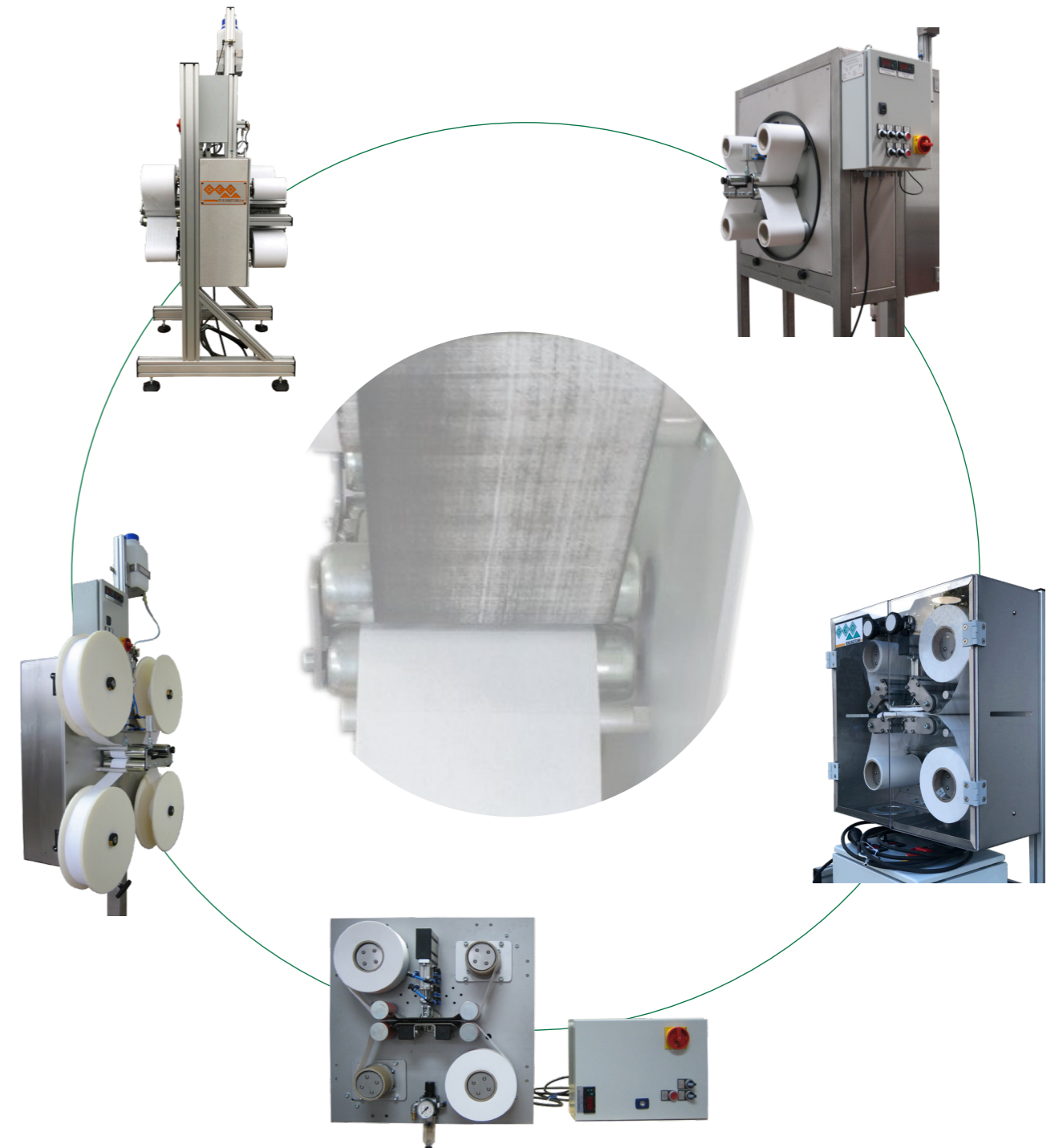


Wire Cleaning max. Ø 4 mm (TWIN)

Multi-Wire Cleaning (Thin Wire)

Tape Cleaning

## PWW SYSTEM > THE INDIVIDUAL FAMILY



Based on the standard layout, the PWW is a flexible system for customers, who are looking for a customized solution for their needs.